



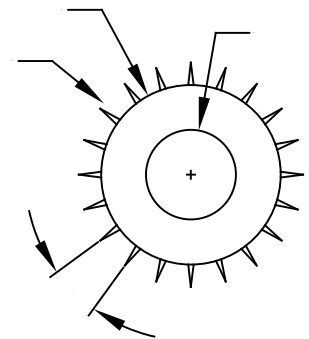
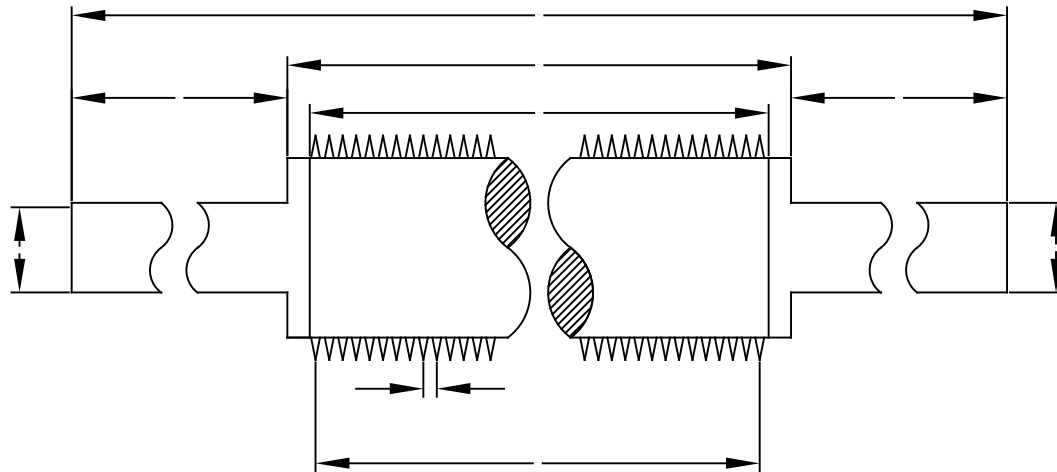
# PINNED PERF ROLLER SPECIFICATIONS

STEWARTS OF AMERICA

HOT PERFORATION  
OPERATING TEMP \_\_\_\_\_ F

COLD PERFORATION

HOW WOULD YOU LIKE TO  
DRIVE THE ROLL?

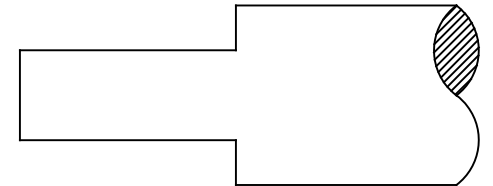
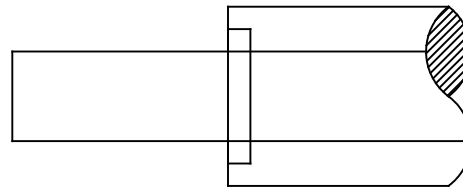
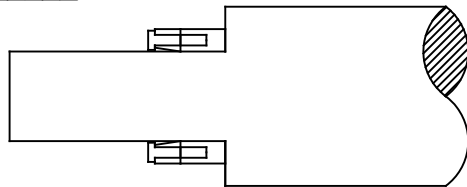
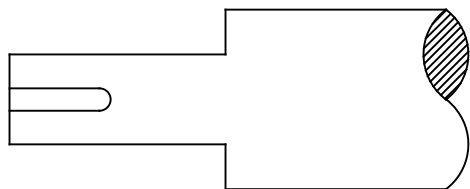


KEYWAY - SIZE \_\_\_\_\_

TAPER LOCK

INTERNAL / ER-STYLE  
BEARINGS WITH THRU SHAFT

NONE, ROLLER TO BE FREE  
SPIN IN BEARINGS



REPORT ALL ERRORS.  
DO NOT SCALE OR ALTER

CUSTOMER APPROVAL		ENGINEER APPROVAL		DESIGNER APPROVAL		MFG. APPROVAL		REV	DESCRIPTION	DATE
UNSPECIFIED TOLERANCES	INCHES ONE DEC. ±0.015 TWO DEC. ±0.005	METRIC 30-1000... ±0.2 >1000... ±0.3 ±0.5	√ SURFACE FINISH.	REFERENCE USED ON	COLD/HOT PERFORATING UNIT	MATL.	STEEL OR ALUM	DRAWN: STEWARTS	DATE:	
STEWARTS OF AMERICA INC. SIMPSONVILLE, SOUTH CAROLINA USA	FIRST ANGLE PROJECTION.	SCALES	TITLE.	PINNED PERF ROLL SPECIFICATION SHEET	TREATMENT	WRS PART#	CUSTOMER#	CHKD.: CUSTOMER	DATE:	<b>PERF ROLL SPEC SHEET</b>