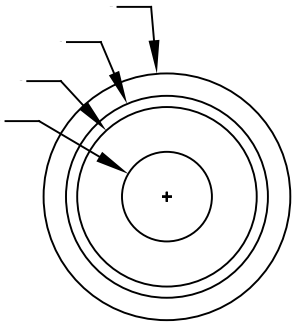
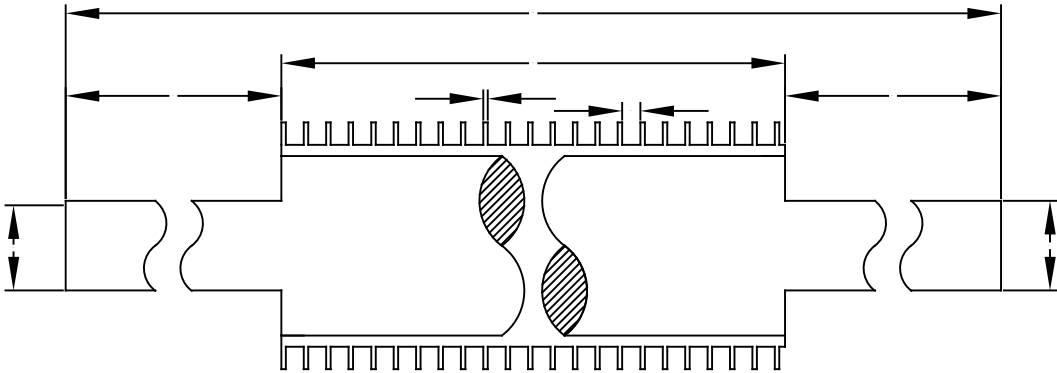




STEWARTS OF AMERICA

RUBBER COVERED GROOVED ROLLER SPECIFICATIONS



HOW WOULD YOU LIKE TO
DRIVE THE GROOVED
ROLL?


☐ KEYWAY - SIZE _____

☐ TAPER LOCK

☐ INTERNAL / ER-STYLE
BEARINGS WITH THRU SHAFT

☐ NONE, ROLLER TO BE FREE
SPIN IN BEARINGS

REPORT ALL ERRORS.
DO NOT SCALE OR ALTER

CUSTOMER APPROVAL		ENGINEER APPROVAL		DESIGNER APPROVAL		MFG. APPROVAL		REV		DESCRIPTION		DATE		
UNSPECIFIED TOLERANCES	INCHES	ONE DEC.±0.015	METRIC	30-1000	±0.2	N/ SURFACE FINISH.	REFERENCE USED ON	MATL.	STEEL OR ALUM	DRAWN: STEWARTS		DATE:		
		TWO DEC.±0.005		>1000	±0.3			TREATMENT		CHKD.: CUSTOMER		DATE:		
STEWARTS OF AMERICA INC. SIMPSONVILLE, SOUTH CAROLINA USA			FIRST ANGLE PROJECTION.			SCALES		TITLE.		BRUSH ROLL		WRS PART#		GROOVE ROLL SPECS
										SPECIFICATION SHEET		CUSTOMER#		
								COLD/HOT PERFORATING UNIT						