



DOUGH DOCKING ROLLER SPECIFICATIONS

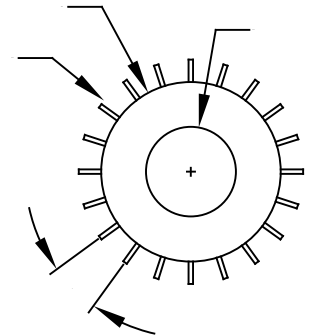
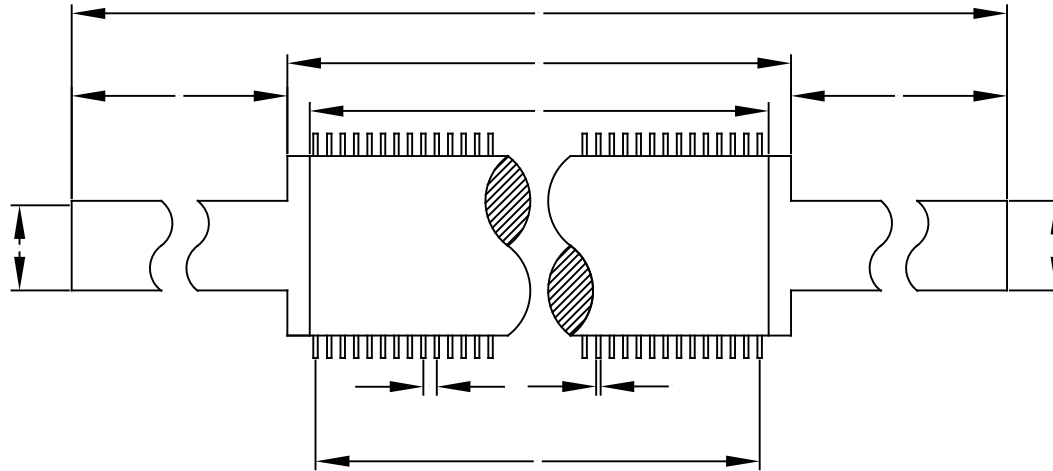
STEWARTS OF AMERICA

NUMBER OF PINS PER ROW: _____

NUMBER OF PIN ROWS: _____

TOTAL PINS PER ROLL: _____

HOW WOULD YOU LIKE TO DRIVE THE ROLL?

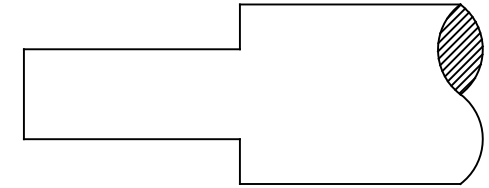
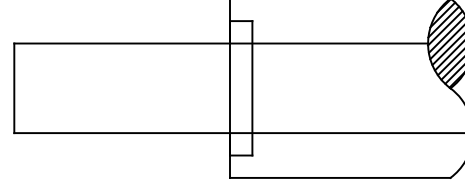
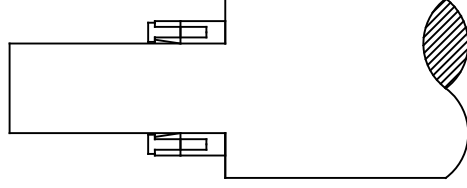
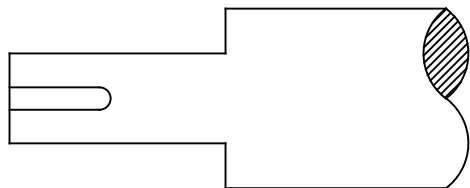


KEYWAY - SIZE _____

TAPER LOCK

INTERNAL / ER-STYLE BEARINGS WITH THRU SHAFT

NONE, ROLLER TO BE FREE SPIN IN BEARINGS



REPORT ALL ERRORS.
DO NOT SCALE OR ALTER

CUSTOMER APPROVAL		ENGINEER APPROVAL		DESIGNER APPROVAL		MFG. APPROVAL		REV	DESCRIPTION	DATE
UNSPECIFIED TOLERANCES	INCHES ONE DEC. ±0.015 TWO DEC. ±0.005	METRIC 30-1000... ±0.2 >1000... ±0.3 ±0.5	√ SURFACE FINISH.	REFERENCE USED ON	FOOD PROCESSING UNIT	MATL.	STAINLESS STEEL OR UHMW	DRAWN: STEWARTS	DATE:	
STEWARTS OF AMERICA INC. SIMPSONVILLE, SOUTH CAROLINA USA	FIRST ANGLE PROJECTION.	SCALES	TITLE.	DOUGH DOCKING ROLL SPECIFICATION SHEET	WRS PART#	CUSTOMER#		CHKD.: CUSTOMER	DATE:	FOOD GRADE