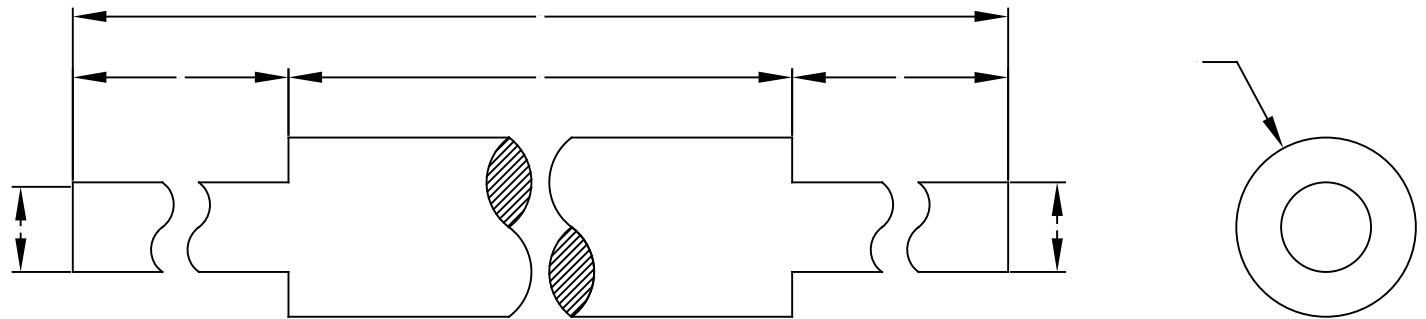




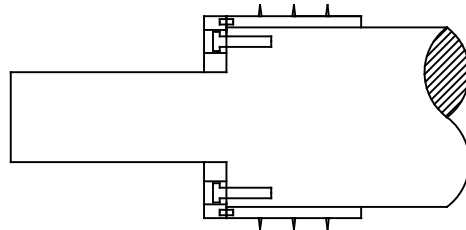
STEWARTS OF AMERICA

CENTER SHAFT FOR PINNED RINGS SPECIFICATIONS

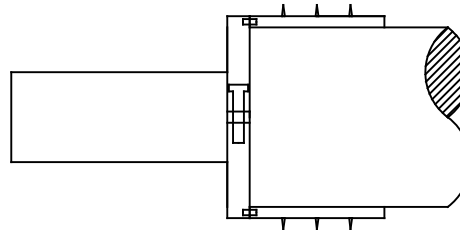


HOW WOULD YOU LIKE TO LOCK THE PINNED RINGS ON THE CENTER SHAFT?

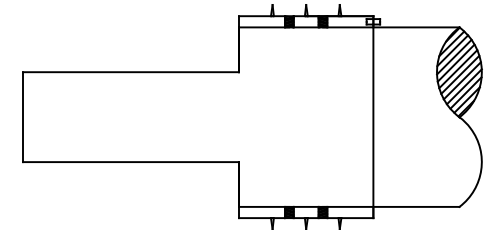
LOCKING END CAP



SPLIT LOCKING COLLAR

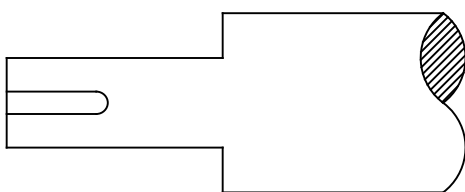


DRILLED AND TAPPED SLEEVE WITH SET SCREW

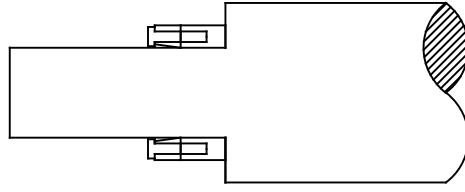


HOW WOULD YOU LIKE TO DRIVE THE CENTER SHAFT?

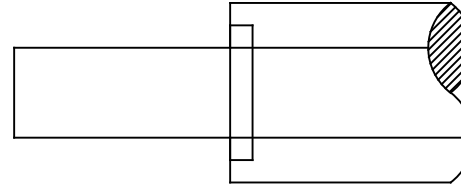
KEYWAY - SIZE _____



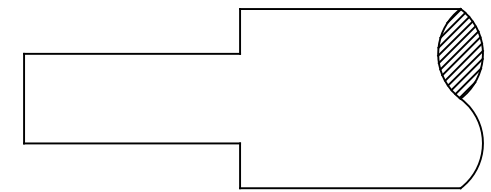
TAPER LOCK



INTERNAL / ER-STYLE BEARINGS WITH THRU SHAFT



NONE, ROLLER TO BE FREE SPIN IN BEARINGS



REPORT ALL ERRORS.
DO NOT SCALE OR ALTER

CUSTOMER APPROVAL		ENGINEER APPROVAL		DESIGNER APPROVAL		MFG. APPROVAL		REV	DESCRIPTION	DATE
UNSPECIFIED TOLERANCES	INCHES ONE DEC. ±0.015 TWO DEC. ±0.005	METRIC 30- <30.....±0.2 1000..±0.3 >1000..±0.5	√ SURFACE FINISH.	REFERENCE USED ON	COLD/HOT PERFORATING UNIT	MATL.	STEEL OR ALUM	DRAWN: STEWARTS	DATE:	
STEWARTS OF AMERICA INC. SIMPSONVILLE, SOUTH CAROLINA USA	FIRST ANGLE PROJECTION.	SCALES	TITLE.	PINNED RING SHAFT SPECIFICATION SHEET	TREATMENT	WRS PART#	CUSTOMER#	CHKD.: CUSTOMER	DATE:	SHAFT SPEC SHEET