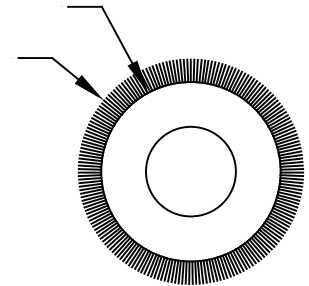
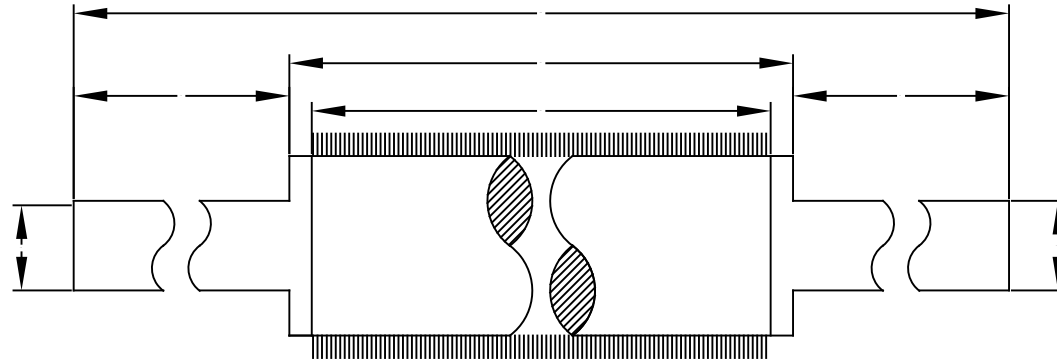




STEWARTS OF AMERICA

BRUSH ROLLER SPECIFICATIONS



HOT PERFORATION
OPERATING TEMP _____ F

COLD PERFORATION

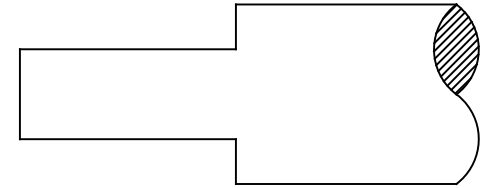
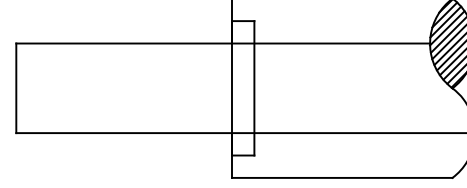
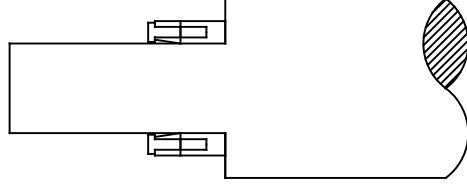
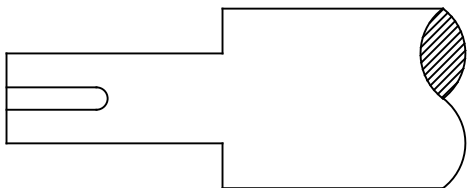
HOW WOULD YOU LIKE TO
DRIVE THE BRUSH ROLL?

KEYWAY - SIZE _____

TAPER LOCK

INTERNAL / ER-STYLE
BEARINGS WITH THRU SHAFT

NONE, ROLLER TO BE FREE
SPIN IN BEARINGS



REPORT ALL ERRORS.
DO NOT SCALE OR ALTER

CUSTOMER APPROVAL		ENGINEER APPROVAL		DESIGNER APPROVAL		MFG. APPROVAL		REV	DESCRIPTION	DATE
UNSPECIFIED TOLERANCES	INCHES ONE DEC. ±0.015 TWO DEC. ±0.005	METRIC <30.....±0.2 30-1000..±0.3 >1000..±0.5	√ SURFACE FINISH.	REFERENCE USED ON	COLD/HOT PERFORATING UNIT	MATL.	STEEL OR ALUM	DRAWN: STEWARTS	DATE:	
STEWARTS OF AMERICA INC. SIMPSONVILLE, SOUTH CAROLINA USA	FIRST ANGLE PROJECTION.	SCALES	TITLE.	BRUSH ROLL SPECIFICATION SHEET	WRS PART#	CUSTOMER#		CHKD.: CUSTOMER	DATE:	BRUSH SPEC SHEET