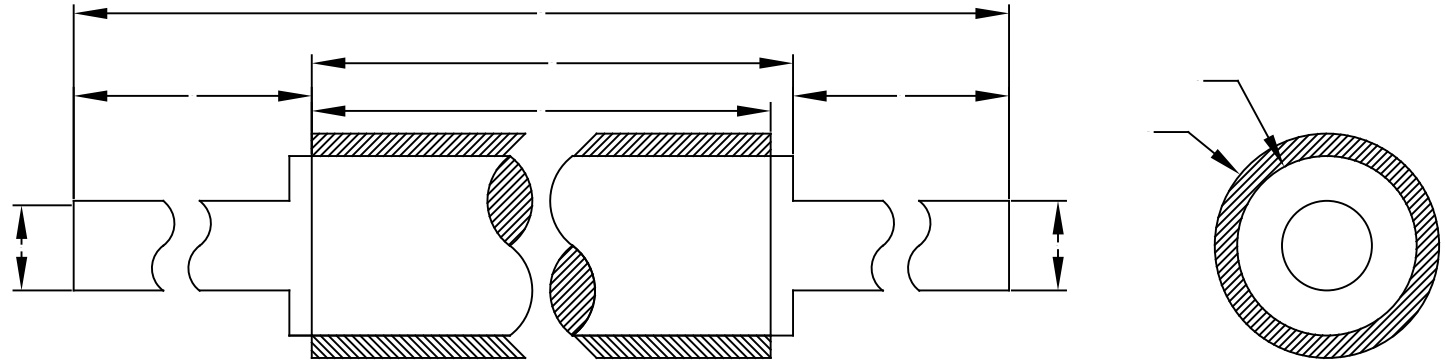




COVERED ROLLER SPECIFICATIONS

STEWARTS OF AMERICA



HOT PERFORATION
OPERATING TEMP _____ F

COLD PERFORATION

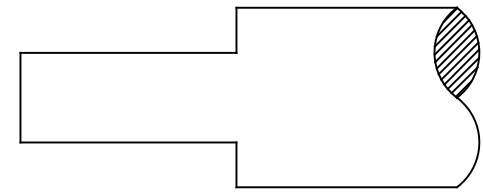
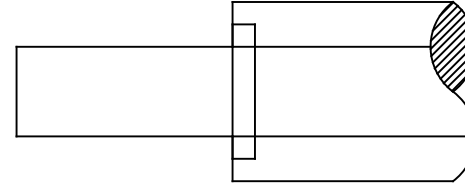
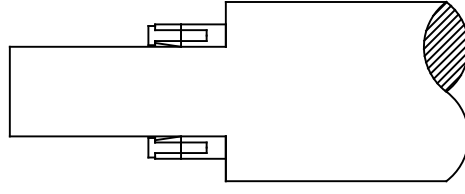
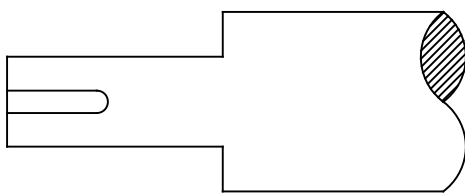
HOW WOULD YOU LIKE TO
DRIVE THE SHAFT?

KEYWAY - SIZE _____

TAPER LOCK

INTERNAL / ER-STYLE
BEARINGS WITH THRU SHAFT

NONE, ROLLER TO BE FREE
SPIN IN BEARINGS



COVERING

RUBBER

URETHANE

SILICONE

DUROMETER / HARDNESS _____

REPORT ALL ERRORS.
DO NOT SCALE OR ALTER

CUSTOMER APPROVAL		ENGINEER APPROVAL		DESIGNER APPROVAL		MFG. APPROVAL		REV	DESCRIPTION	DATE
UNSPECIFIED TOLERANCES	INCHES ONE DEC. ±0.015 TWO DEC. ±0.005	METRIC 30- <30.....±0.2 1000..±0.3 >1000..±0.5	N/ SURFACE FINISH.	REFERENCE USED ON	COLD/HOT PERFORATING UNIT	MATL.	STEEL OR ALUM	DRAWN: STEWARTS	DATE:	
STEWARTS OF AMERICA INC. SIMPSONVILLE, SOUTH CAROLINA USA	FIRST ANGLE PROJECTION.	SCALES	TITLE.	COVERED ANVIL ROLL SPECIFICATION SHEET	WRS PART#	CUSTOMER#		CHKD.: CUSTOMER	DATE:	ANVIL ROLL SPEC SHEET