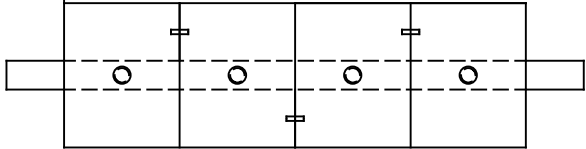


OPTIONS FOR SECURING PINNED RINGS ON THE CENTER ROLLER SHAFT

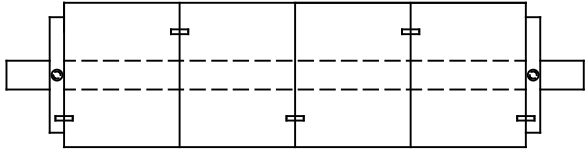
Option 1.

Each pinned ring has its own set screw/s. Each ring locks onto center shaft. Interlocking dowel pins are optional, but recommended



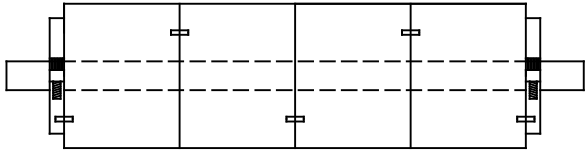
Option 2.

Locking rings secured by set screw/s. Each locking ring locks onto center shaft. Interlocking dowel pins are optional, but recommended



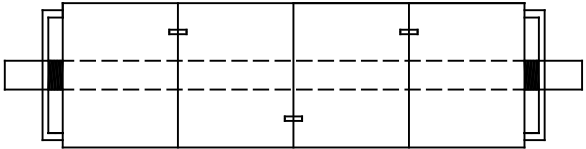
Option 3.

Locking rings are split secured by set screw/s. Each locking ring locks onto center shaft. Interlocking dowel pins are optional, but recommended



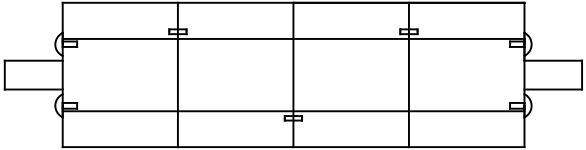
Option 4.

Locking rings with internal threads are screwed onto the OD threads that are machined into the shaft holding the pinned rings. Interlocking dowel pins are optional, but recommended



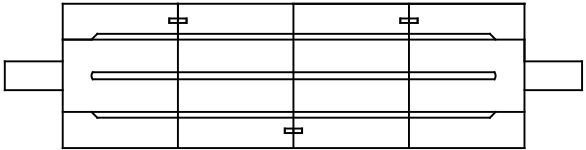
Option 5.

The end of the roll is drilled and tapped. Dome head screws are inserted to lock rings on the center shaft. Interlocking dowel pins are optional, but recommended



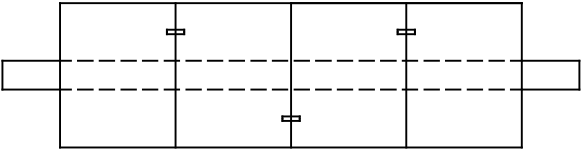
Option 6.

Center shaft is an air shaft. The shaft is inflated with compressed air and deflated by a valve on the end of the roller. Interlocking dowel pins are optional, but recommended



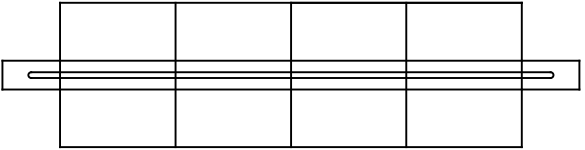
Option 7.

Each pinned ring is press fitted onto a center shaft. Interlocking dowel pins are optional, but recommended



Option 8.

Male keyway machined into center shaft. ID of the pinned ring is borched and press fitted onto the center shaft. Interlocking dowel pins are optional, but recommended



REPORT ALL ERRORS.
DO NOT SCALE OR ALTER

CUSTOMER APPROVAL		ENGINEER APPROVAL		DESIGNER APPROVAL		MFG. APPROVAL		REV	DESCRIPTION	DATE
UNSPECIFIED TOLERANCES	INCHES ONE DEC. ± 0.015 TWO DEC. ± 0.005	METRIC 30-1000 ± 0.2 1000-10000 ± 0.3 10000-100000 ± 0.5	∇ SURFACE FINISH.	REFERENCE USED ON	LOCK OPTIONS	MATL.	VARIES	DRAWN: STEWARTS	DATE: DESIGN	
STEWARTS OF AMERICA INC. SIMPSONVILLE, SOUTH CAROLINA USA		FIRST ANGLE PROJECTION.	SCALES	TITLE.	PERF ROLL	TREATMENT	NONE	CHKD.: STEWARTS	DATE: DESIGN	
					LOCKING OPTIONS FOR PINNED RING ON CENTER SHAFT	WRS PART#	N/A	LOCKING OPTIONS		
						CUSTOMER#	VARIES			